



Umberto Eco's text 'La Quarta Roma' (The Fourth Rome), 2001.

**a window with a view (5.2)**

A text piece to draw attention to the Crown Court Tower visible outside the window, which acts like a frame of a 'living painting.'

**the voice of the ghost buildings (5.3)**

3D object & text

Fragments located in the Horrockses' model, representing buildings that are no longer there, with a text reporting imaginary testimony of people hearing the "voice of the ghost buildings."

**BASEMENT \***

Zone 2 - The builder

**room A: under construction (2.1)**

video projection, 6 minutes

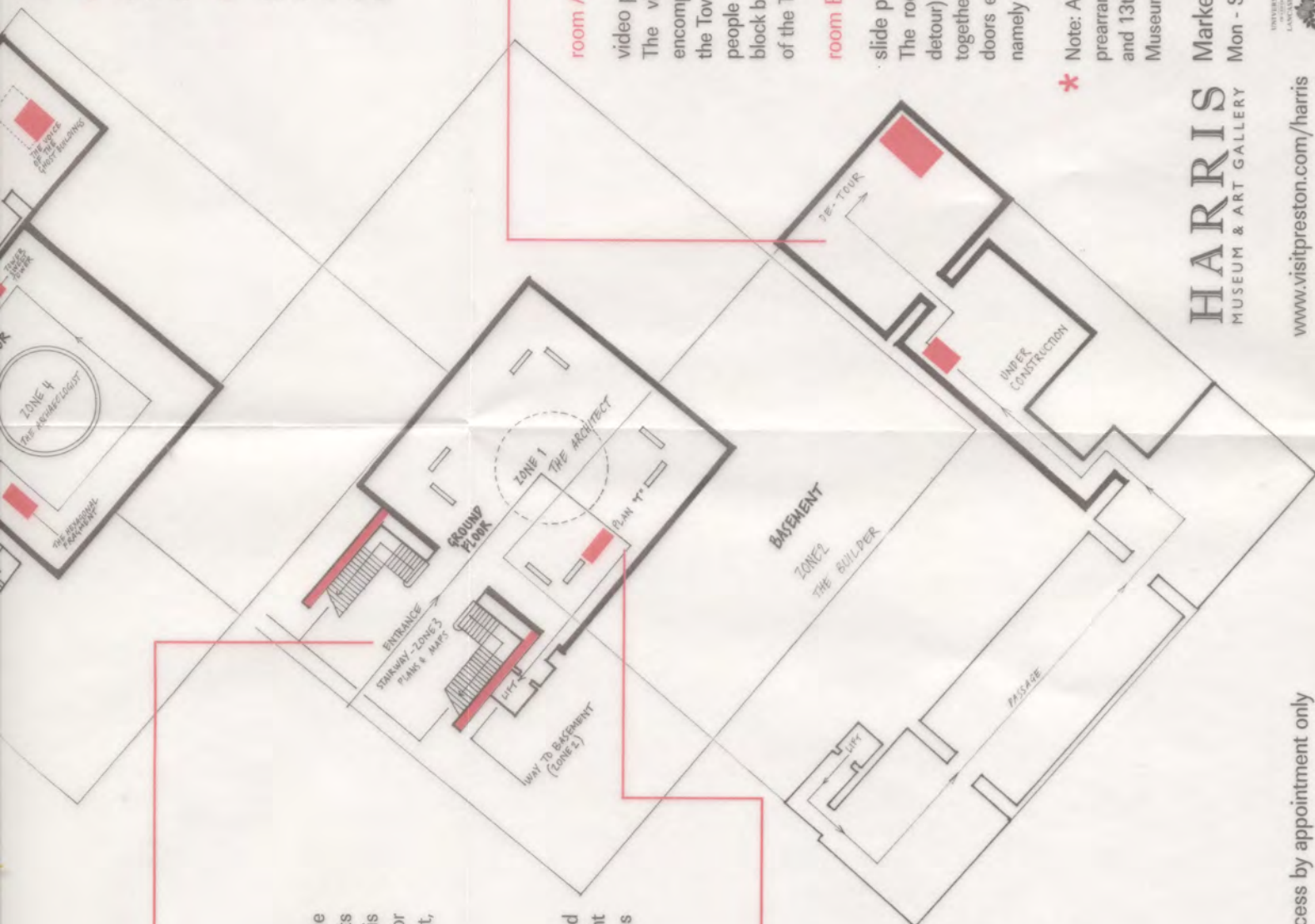
The video contains personal and archival material encompassing four years' work, from the "We are building the Tower of Babel" line written in 13 different languages by people of 13 nationalities to the sequence of Preston tower block buildings demolished in November 2001. The building of the Tower is symbolically linked to its own destruction.

**room B: de - tour (2.2)**

slide projection, approx. 4 minutes.

The room becomes the stage for an imaginary tour (or detour) in the space of the city; different cities are linked together by 'neutral' spaces such as stairways, passages, doors etc. to suggest their being part of a bigger context, namely the Tower building.

\* Note: Access to Zones Two and Seven is strictly limited to prearranged tours on 16th, 23rd, 30th October and 6th and 13th November at 2.00pm. Please contact the Museum Office to book.



3D object

A biscuit tower among chess pieces.

**STAIRWAYS**

Zone 3 - The plans & maps until 19th October

**left stairway: project plans (3.2)**

silkscreen prints

The prints show the plans for the Reconstructing Babel project and its transposition into the book format. The book is available to view at the Archive, Centre for Contemporary Art, 37 St. Peter's Street, Preston.

**right stairway: eight towers (3.1)**

watercolour paintings

The paintings are based on a simplified structure of the Museum. The number eight refers to the levels of the Tower of Babel as reported in an ancient tale by Herodotus.

**GROUND FLOOR - Rotunda Cafe**

Zone 1 - The architect

**plan T (1.1)**

3D exhibition map in a wooden box

The box contains five sheets of perspex with the Harris plans screenprinted on top. They can be pulled out in order to obtain an axonometric view of the building, in which each floor has a distinct colour and the artist's interventions are marked red. Once closed, the box can be transported as a suitcase.

Interventions

— Suggested route

\* Access by appointment only

**HARRIS**  
MUSEUM & ART GALLERY

Market Square, Preston, PR1 2PP  
Mon - Sat 10am - 5pm Admission Free 01772 258248

www.visitpreston.com/harris

